

# element<sup>TM</sup> EVOLUTION

## Tanso Tablet User Manual



Rev 1.1

The information in this document is subject to change without notice and therefore should not be interpreted in any way as a guarantee or warranty by Element. Element assumes no responsibility or liability for any errors that may appear in this document.

#### Trademark

Intel® are registered trademarks of Intel® Corporation. Microsoft® and Windows® are registered trademarks of Microsoft Corporation. Other trademarks mentioned in this document are property of their respective owners.

#### Safety Instructions

1. Ensure the unit is charged using the supplied power adaptor and ensure the adaptor is not used with other appliances such as smartphones. Element does not assume responsibility for damage due to the misuse of the supplied power adaptor.
2. Do not use this unit near water.
3. Do not place this unit on an unstable stand or table, this may cause damage to the frame and/or screen.
4. Ensure the ventilation holes on each side of the unit are not blocked to protect the unit from overheating.

#### Caution:

Do not replace battery with an incorrect type.

Do not disposal battery into fire or a hot oven, or mechanically crushing or cutting of a battery, that can result in an explosion.

Do not leaving battery in an extremely high temperature surrounding environment that can result in an explosion or the leakage of flammable liquid or gas.

Do not leaving battery subjected to extremely low air pressure that may result in an explosion or the leakage of flammable liquid or gas.

Do not used in low air pressure at high altitude condition.

Do not used in high or low extreme temperatures.



- element 1a: the symbol ,
- element 2: “High sound pressure” or equivalent text
- element 3: “Hearing damage risk” or equivalent text-  
element
- element 4: “Do not listen at high volume levels for long  
periods.” or equivalent text

## Revision History

Changes to the DRAFT user manual are listed below:

Revision	Description	Date
1.0	<ul style="list-style-type: none"><li>Initial Draft</li></ul>	2024/1/4
1.1	<ul style="list-style-type: none"><li>Formatting fixes</li></ul>	2024/4/26
	<ul style="list-style-type: none"><li></li></ul>	

## Table of Contents

<b>Tanso Tablet User Manual.....</b>	<b>1</b>
<b>Operation of the Tanso Tablet.....</b>	<b>5</b>
<b>Packing List.....</b>	<b>5</b>
<b>System View .....</b>	<b>5</b>
<b>Front View .....</b>	<b>5</b>
<b>Rear View .....</b>	<b>6</b>
<b>Specifications.....</b>	<b>6</b>
<b>I/O.....</b>	<b>7</b>
<b>Basic Troubleshooting .....</b>	<b>8</b>
<b>Warranty and RMA .....</b>	<b>10</b>
<b>Warranty .....</b>	<b>10</b>
<b>RMA Returns.....</b>	<b>10</b>
<b>Appendices.....</b>	<b>11</b>
<b>Appendix A .....</b>	<b>11</b>

## Operation of the Tanso Tablet

To power on the unit, hold the short power button located on the top left-hand side of the tablet. When powering the unit on, the charging indicator LED will light up blue momentarily.

If the unit freezes and it is unable to shutdown via Microsoft® Windows®, you may hold the power button until the unit forcefully powers down, take care when doing this as it may result in corrupted data if done frequently.

This unit is powered by an embedded lithium battery pack for use without being tethered to an AC adaptor. The battery is recharged whenever the tablet is connected to the included AC adaptor. Charge-in-use is supported however, this will significantly increase the charge time.

When charging the battery, the charging indicator LED will light up red to indicate charging is in progress, and when complete will light up blue.

## Packing List

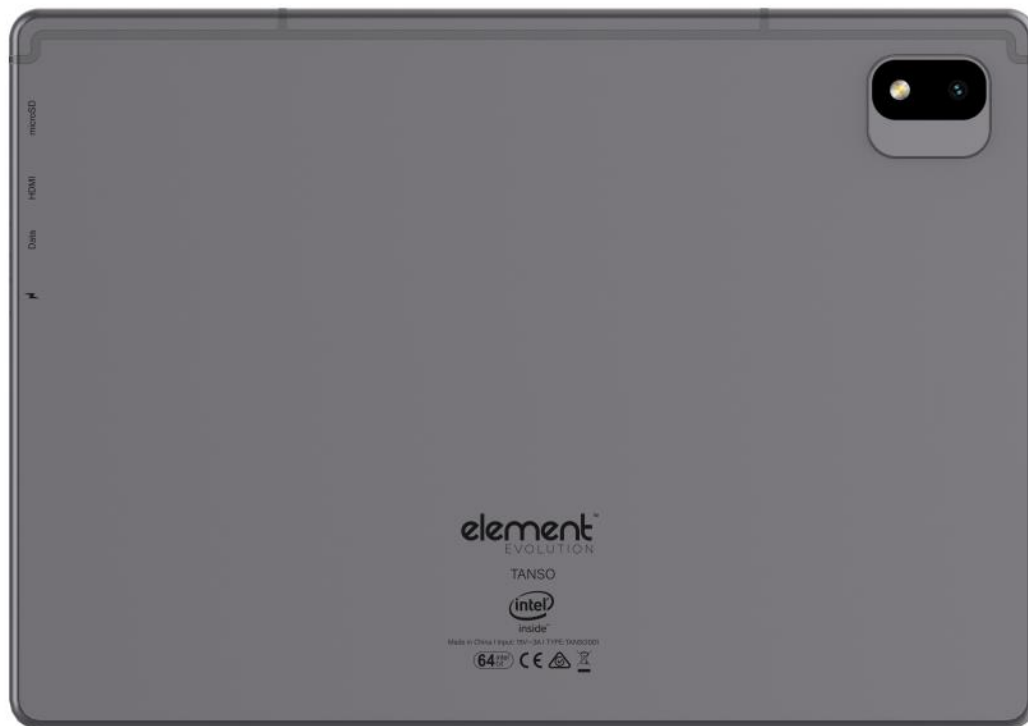
- Tanso Tablet
- Tanso Tablet case
- Type-C 45W Power adapter (multi region)
- USB-C cable
- Tanso e-manual card

## System View

### Front View



## Rear View



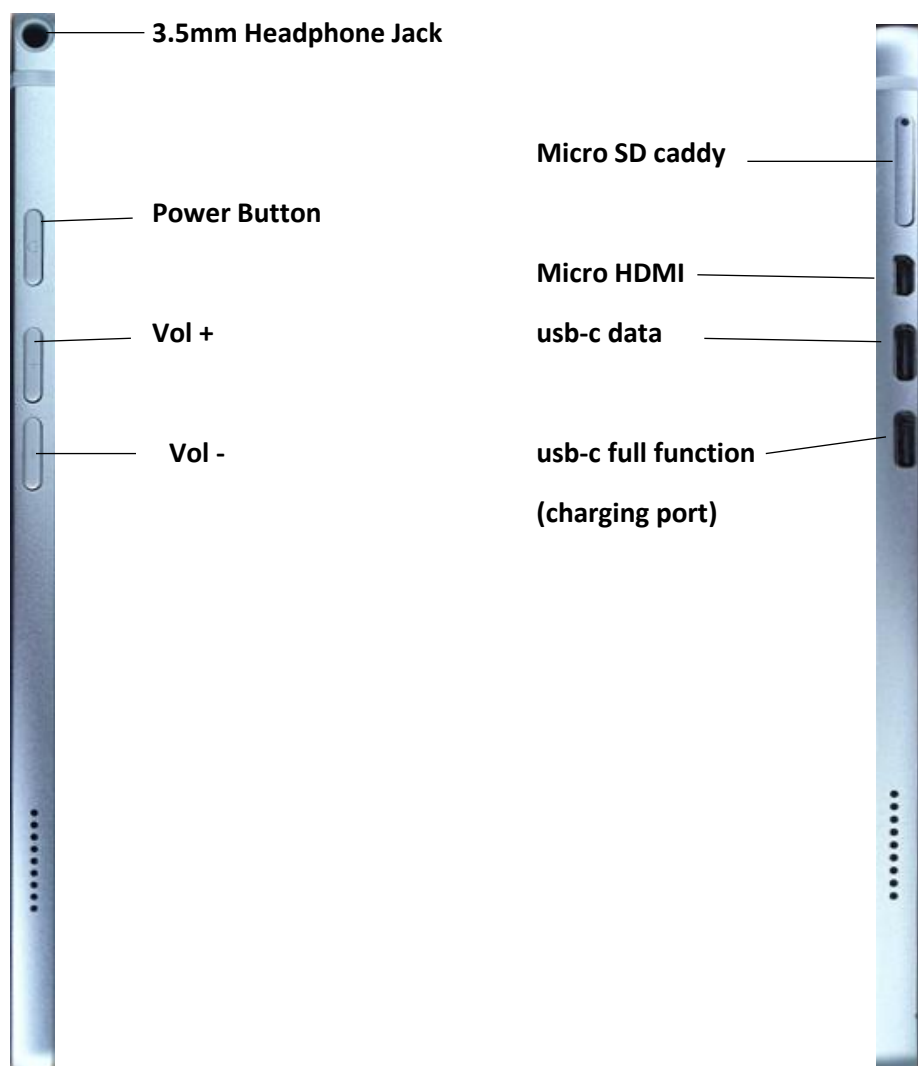
## Specifications

<b>Brand</b>	<b>Element</b>
<b>Model</b>	<b>Tanso Tablet</b>
<b>Operating System</b>	<b>Windows 11 Pro</b>
<b>CPU</b>	<b>Alder lake-N N100</b>
<b>RAM</b>	<b>8GB LPDDR5</b>
<b>ROM</b>	<b>256GB M.2 22*42</b>
<b>Extended Storage</b>	<b>Micro SD scard up to 512GB*</b>
<b>Screen size</b>	<b>10.5"</b>
<b>Resolution</b>	<b>1920*1280 IPS</b>
<b>Networking</b>	<b>WIFI 802.11 a/b/g/n/ac</b>
<b>Bluetooth</b>	<b>Version 5.1</b>

<b>I/O</b>	<b>3.5mm headphone jack</b> <b>Micro HDMI</b> <b>Type-c data</b> <b>Type-c Full function</b> <b>Power*1; VOL+*1; VOL-*1</b> <b>Micro SD</b>
<b>Camera</b>	<b>Front: 2MP Rear:5MP</b>
<b>Battery capacity</b>	<b>3500mAh</b>
<b>Power adapter</b>	<b>TYPE- C 45W</b>
<b>Power adapter output</b>	<b>5.0V 3.0A / 9.0V 3.0A / 12.0V 3.0A /15.0V 3.0A / 20.0V 2.25A</b>
<b>MAX</b>	<b>45.0W</b>
<b>Type-c Output</b>	<b>1.0A-1.1A</b>
<b>Dimensions</b>	<b>247.6*173.6*8.8mm</b>

I/O





## Basic Troubleshooting

### The tablet does not boot

1. Check if the battery has not been depleted.
2. Plug the unit into the supplied charger, the charge light should appear red.
3. If the unit will not power on, the battery is depleted and will need time to recharge before the unit will work.
4. If the unit turns on but does not boot into Windows try following the Recovery steps below.

### Windows Recovery

1. Turn the unit on and press F7 to launch the boot devices.
2. Select Setup.



**3.Navigate to Save & Exit then select Windows Recover under Boot Override.4.Select Troubleshoot.**

**5.Select Advanced Options, then Startup Repair and, follow the prompts.**

**If Startup Repair does not x the issue, select See More Recovery Options and select System Restore**

**No Internet or network connection**

**1.Ensure the unit is connected to the Wi-Fi network using Windows' Network & Internet settings.**

**2.Ensure there is a strong enough Wi-Fi signal, try moving closer to the access point.**

**The unit will not charge**

**1.Ensure the power supply is plugged into the correct USB-C port.**

**2.Ensure you are using the original power supply.**

**3.Ensure the power light (top left) lights up when the unit is connected to the charger.**

## Warranty and RMA

### Warranty

All Goods carry a twelve-month, return to base, parts and labour warranty unless otherwise stated. Damage caused by misuse or abuse, electrical damage due to power fluctuations such as surges or spikes, incompatible consumables or software, are not covered under warranty. Consumables or incorrect operation of any Goods according to the manufacturers' recommendations are not covered under warranty. Proof of purchase is to be supplied with all warranty claims.

Unless otherwise stated in writing, where an extended warranty is taken on any Goods, the scope of that warranty will be as per the standard warranty for the extended period taken. An extended warranty may only be taken on new Goods and cannot be taken retrospectively. Any payment for extended warranty must be made at the time of the original product purchase.

### RMA Returns

Before returning any Goods, an RMA (Return Merchandise Authorization) number must be requested and issued. Goods will not be accepted, credited, or replaced without the RMA number stated on the returned Goods. Consumable items are not eligible for credit or return unless otherwise agreed by the Company in writing. Unauthorized returns will not be shipped back to the sender except at its expense (a handling fee may also apply).

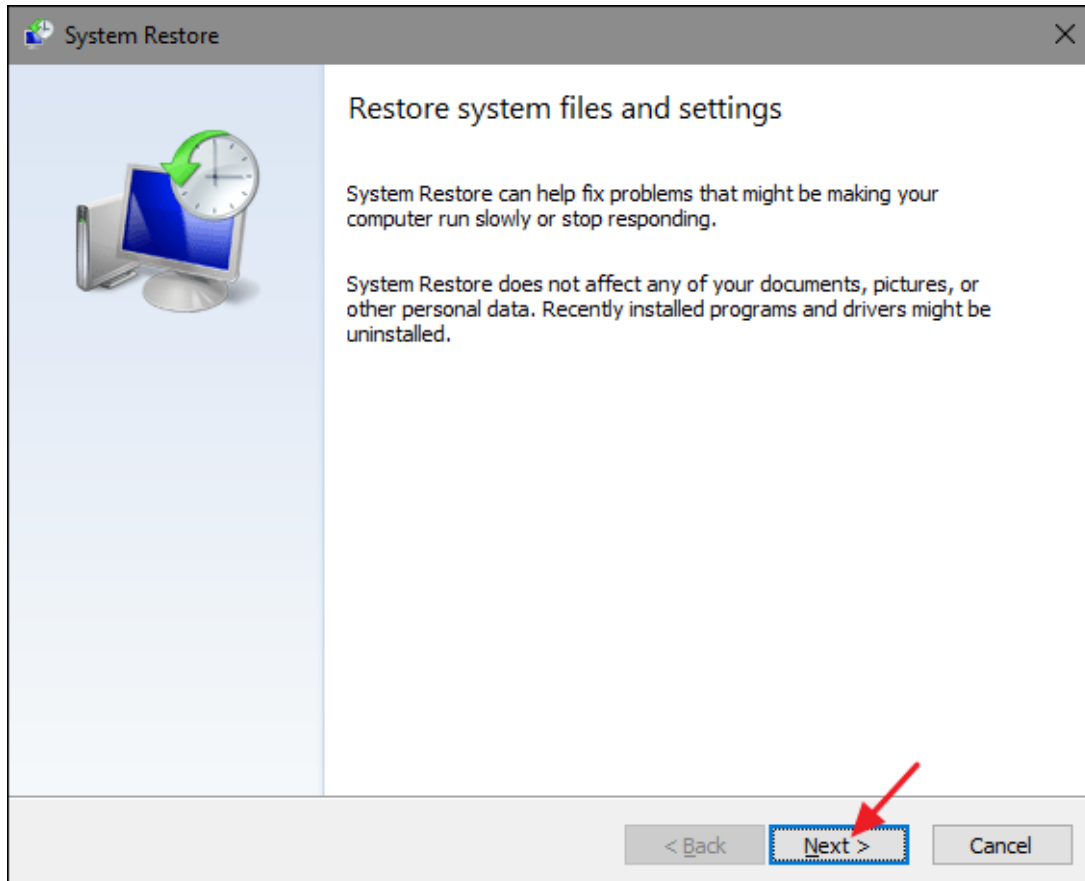
The Customer may return authorised Goods or parts ("items") using the shipping method of its choice and is responsible for the return shipping charges. The Company recommends that the Customer insures the return shipment as the Company cannot be responsible for damaged or lost shipments. Used or otherwise altered items not in new condition are not eligible for credit. Upon receipt of your returned items, the Company will inspect them, return them to inventory if in a new unused condition and issue the Customer with the credit according to the conditions of the applicable Cancellation of Order.

Please note, we recommend keeping the original packaging for warranty claims and/or shipping.

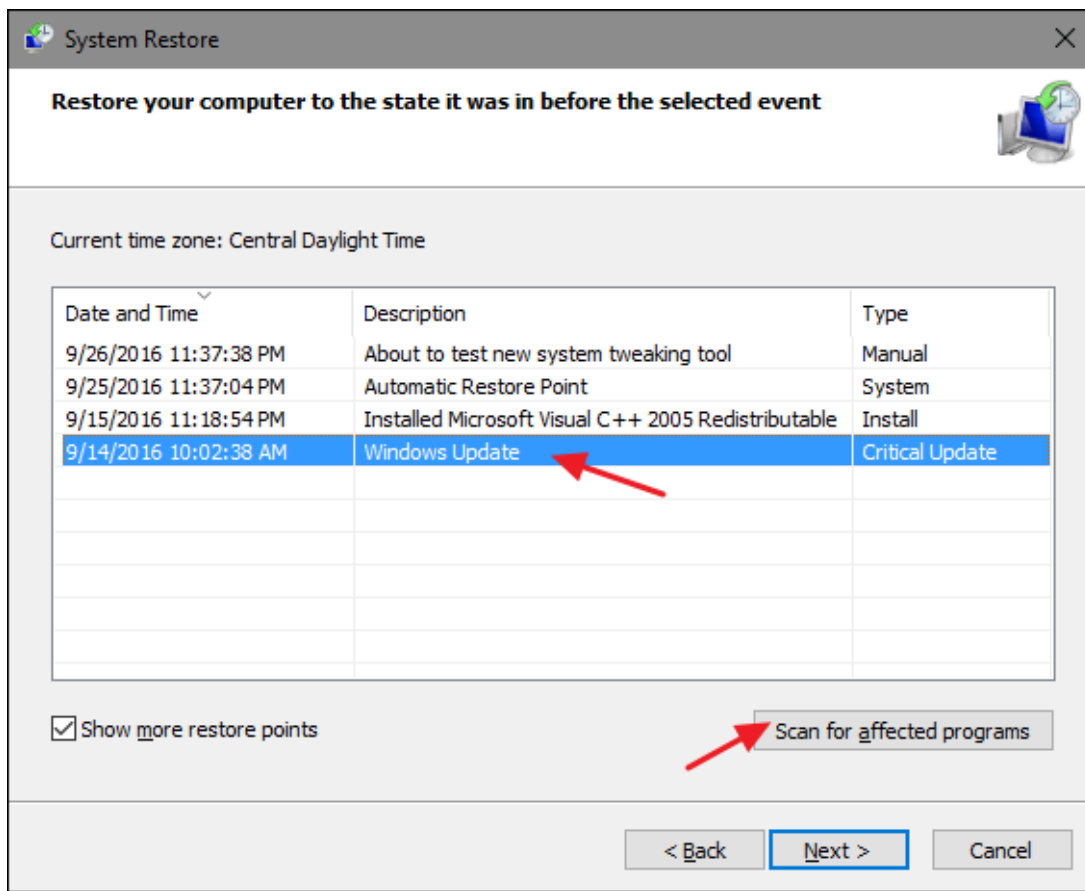
## Appendices

### Appendix A

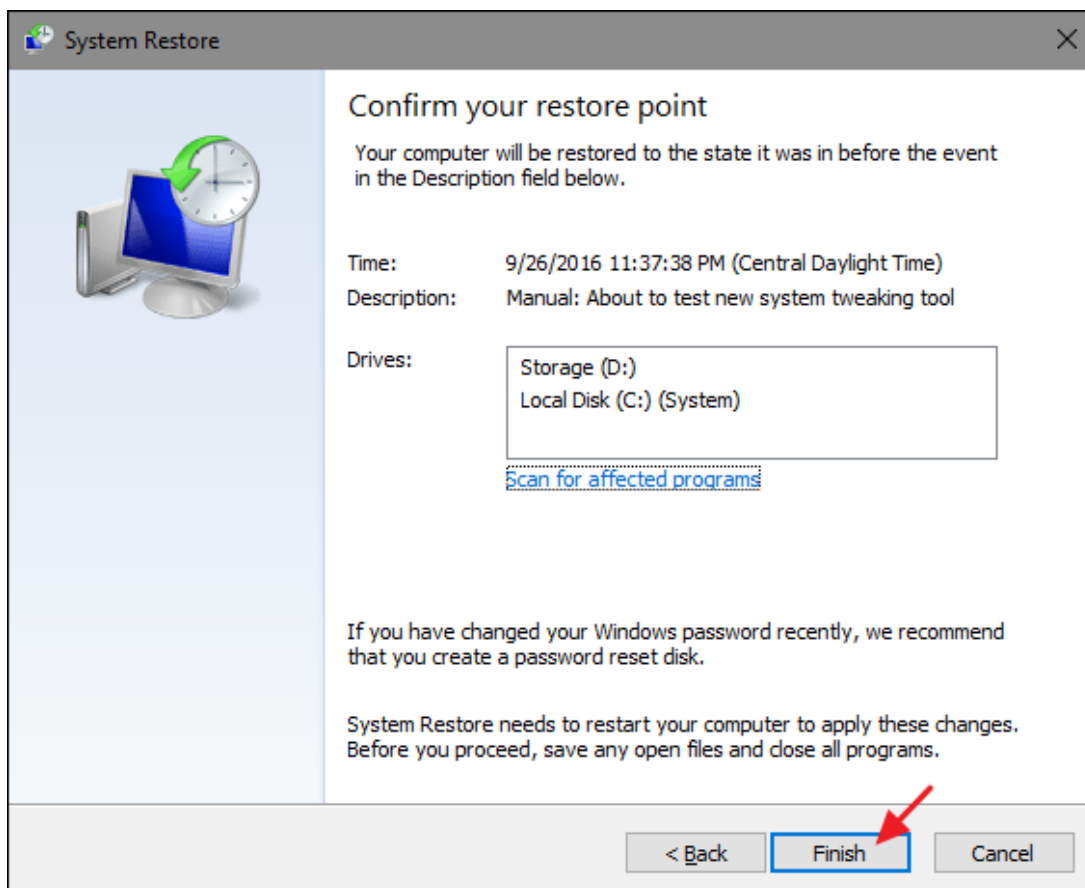
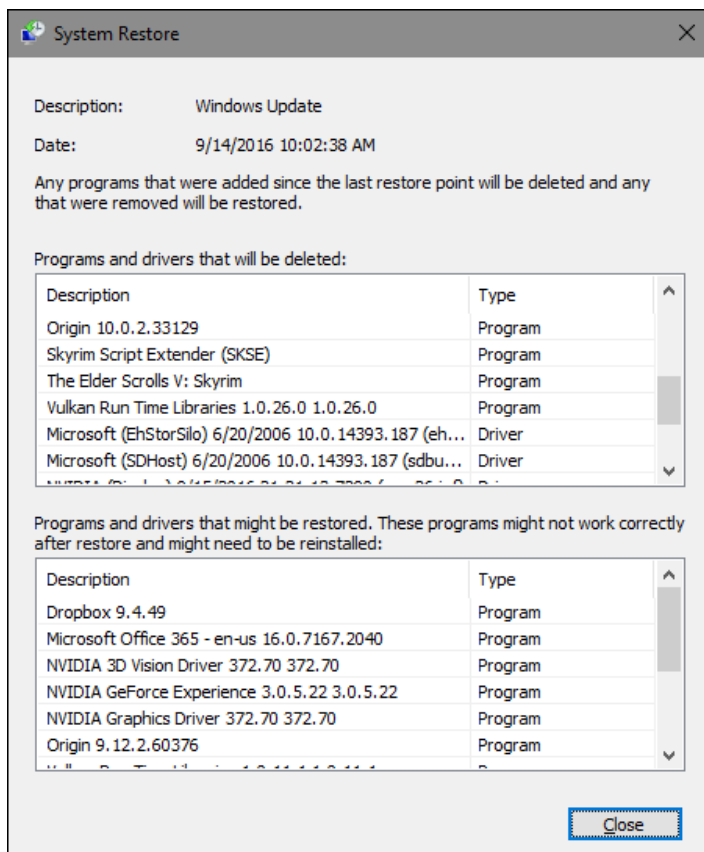
#### Windows Startup Repair



Click Next.



Select a restore point, then scan for any affected programs they'll be listed in the dialogue box below. After taking note, click close.



Click Finish, then click Yes.

